

# SkillME assists employers to grow and gain the benefits of a culturally diverse workforce



Growing numbers of employers are seeing that a culturally diverse workforce can provide benefits to their bottom line by providing:

#### **Greater Access to New Markets**

A diverse workforce can introduce a business to a diverse and broad customer-base that it may not have reached otherwise.

#### **Enriched Decision-Making**

By virtue of greater diversity, a cross-cultural workforce promotes new ways of thinking and doing.

#### **Better access to talented and reliable people**

People from diverse cultural backgrounds bring a broad range of skills and experience with them.

#### **How can SkillME help?**

Funded by the NSW Government through Multicultural NSW, SkillME assists a targeted group of migrants in having their skills and qualifications assessed, developing job readiness skills, undertaking work experience and ultimately finding a job.

SkillME can put you in touch with the right people from a pool of over 300 migrants from non-English speaking backgrounds who have volunteered to participate in this pilot program. They have permanent residency and full work rights, recognised qualifications across a broad range of professions and occupations and English language proficiency.

#### **What can you do?**

Having a job is a critical factor in the successful settlement of migrants. SkillME participants are highly motivated to find a job to continue their settlement and to contribute to their new country.

#### **Employers can provide opportunity by:**

##### **Providing work experience**

Having Australian work experience is a big factor in improving the job prospects of migrants from non-English speaking backgrounds. On the job training is a great benefit.

**Becoming a mentor** to guide and support SkillME participants to find a job. Organisations often find this type of activity has staff development benefits and improves morale.

**Introducing SkillME participants** to their networks and supply chains

**Providing a job** by notifying job vacancies to SkillME

**Sponsoring training** for a participant/s not eligible for government funding

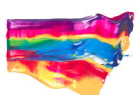
#### **Contact**

April Pan

SkillME Coordinator

[skillmeproject@metroassist.org.au](mailto:skillmeproject@metroassist.org.au)

call Metro Assist  
on 9789 3744



MULTICULTURAL  
NSW



metro assist



Want to know more about our service? Visit [www.metroassist.org.au](http://www.metroassist.org.au)